



# Bond Projects for The Royal School District

Election Day – February 12, 2019




# History

- Good Stewards with Taxpayers Money
  - Conservative projects (remodel as opposed to new buildings)
  - Red Rock Remodel without a bond
  - Bring the rest of the campus up to a standard of which our community can be proud
  - Survey to determine if information aligns with perceptions
- Reviewed several projects that had been on previous bond proposals
- 2017-2018: Series of community outreach meetings for input/feedback
- Concern for Student and Staff Safety
- Keeping up with Infrastructure
- Growing Enrollment (Average 30 students per year over past 10 years)
- On November 26<sup>th</sup>, the Board passed a resolution to run a bond in February of 2019



# Safety is our No. 1 Priority

- Commitments in District Vision Plan – “Ensure that safety is our number one priority”
  - Positive Feedback on buzz-in vestibule at Royal Intermediate School
  - Desire to deter unwanted intruders
  - Recent survey identified safety concerns as a high priority for projects
  - The survey also identified conditions of the middle school, cafeteria and bus garage as unacceptable or fair.
- 



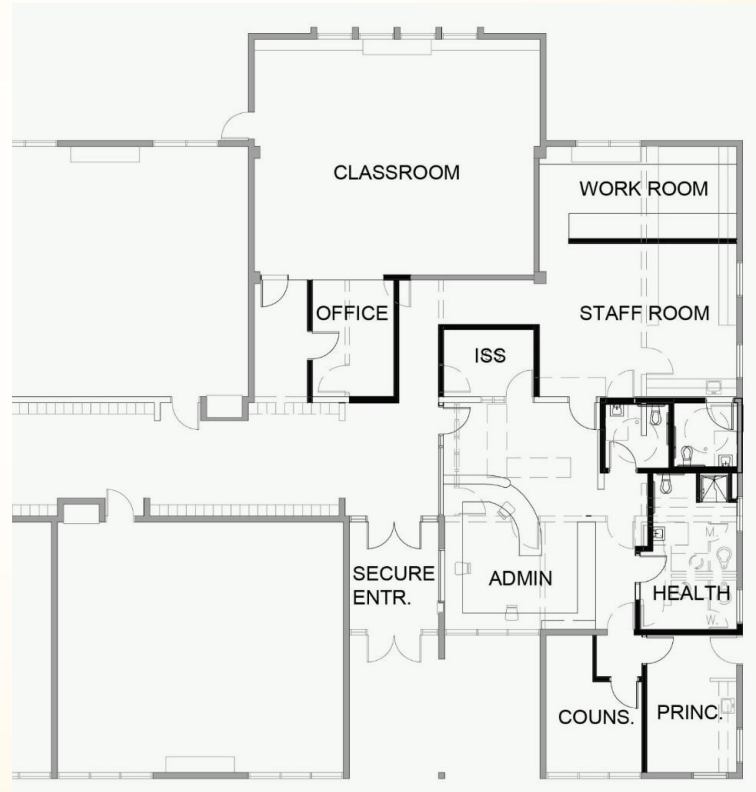
# Middle School

- Middle School
  - Built in the 1967
  - Lacks Fire Suppression System
  - Modernization and Reconstruction
  - Re configure Office Area to create buzz-in vestibule (Like Intermediate School)
  - Additional Classroom Space
  - Replace mechanical (HVAC, Electrical, Technology and Plumbing)

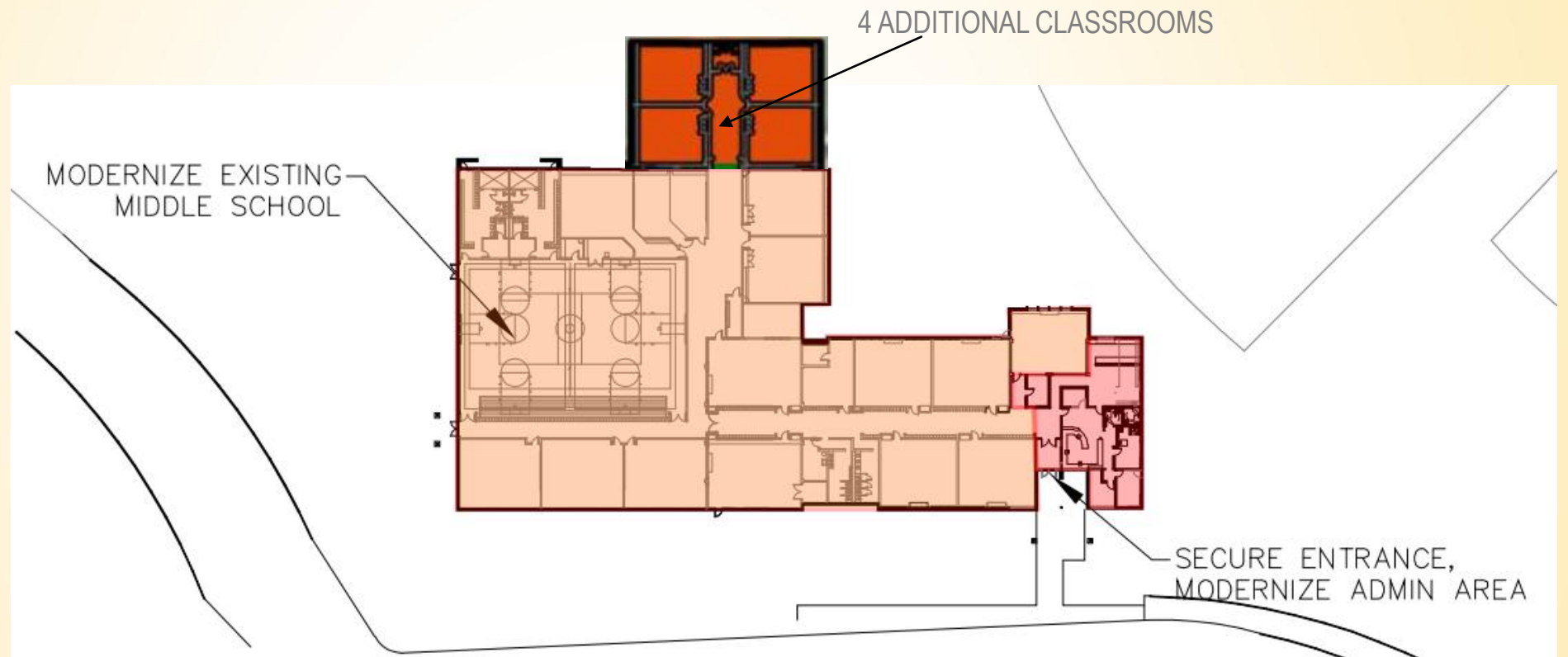
# Middle School – Current Entrance



# Secure & Reconfigured Office Area Middle School



# Middle School







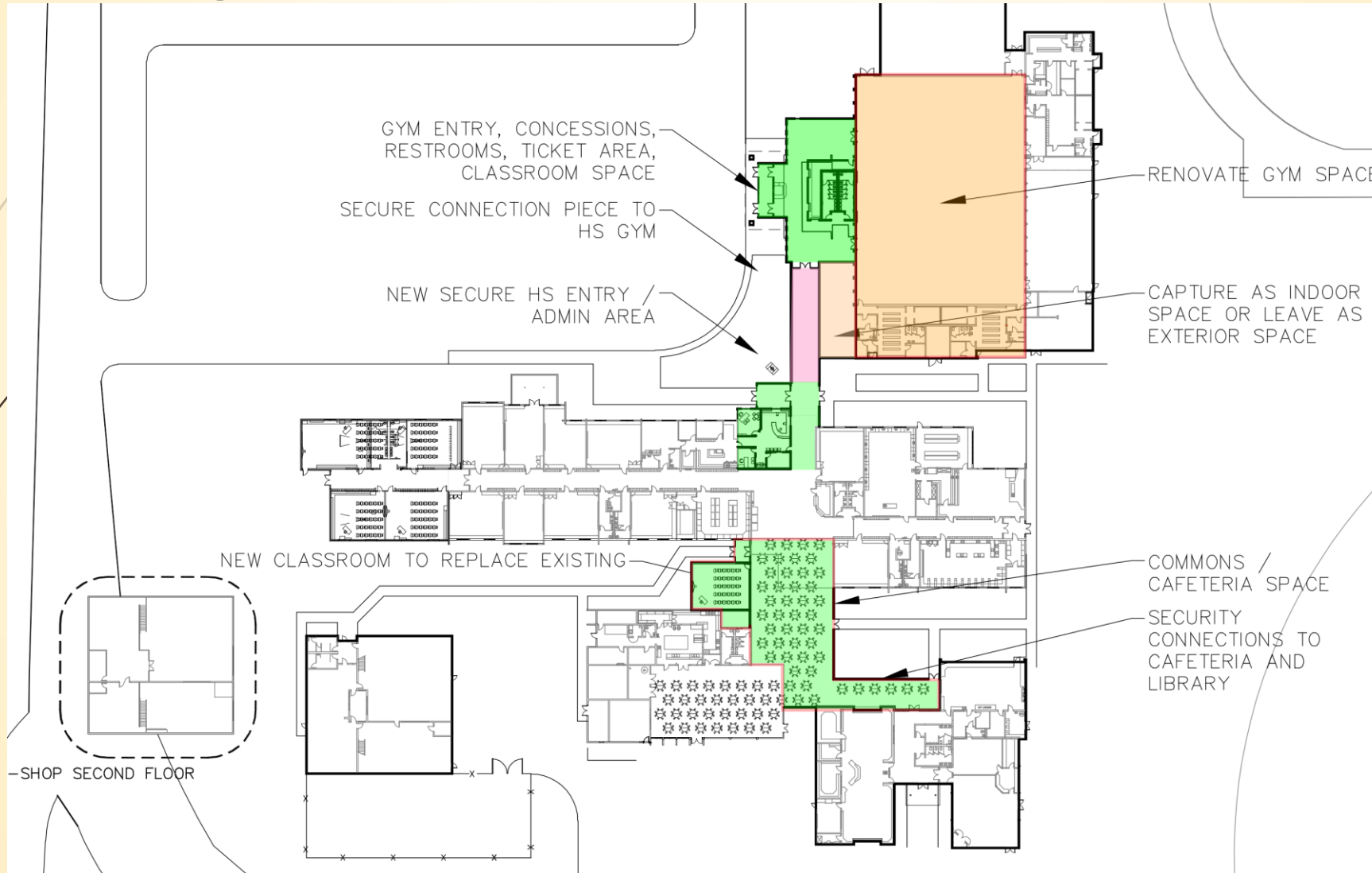
# High School



- Single Point of entry
- Expand cafeteria and connect to library and main building
- Connect front of building with gym
- Update Gym (Complete Renovation)
  - Foyer
  - Bleachers
  - Floor
  - HVAC (Heating and Air-conditioning)
  - Locker Rooms (ample expansion)
  - Scoreboards



# High School



# High School Gym & HS Main Entrance



Parts are no longer made for 8 heating units. Only 1 is still operational.

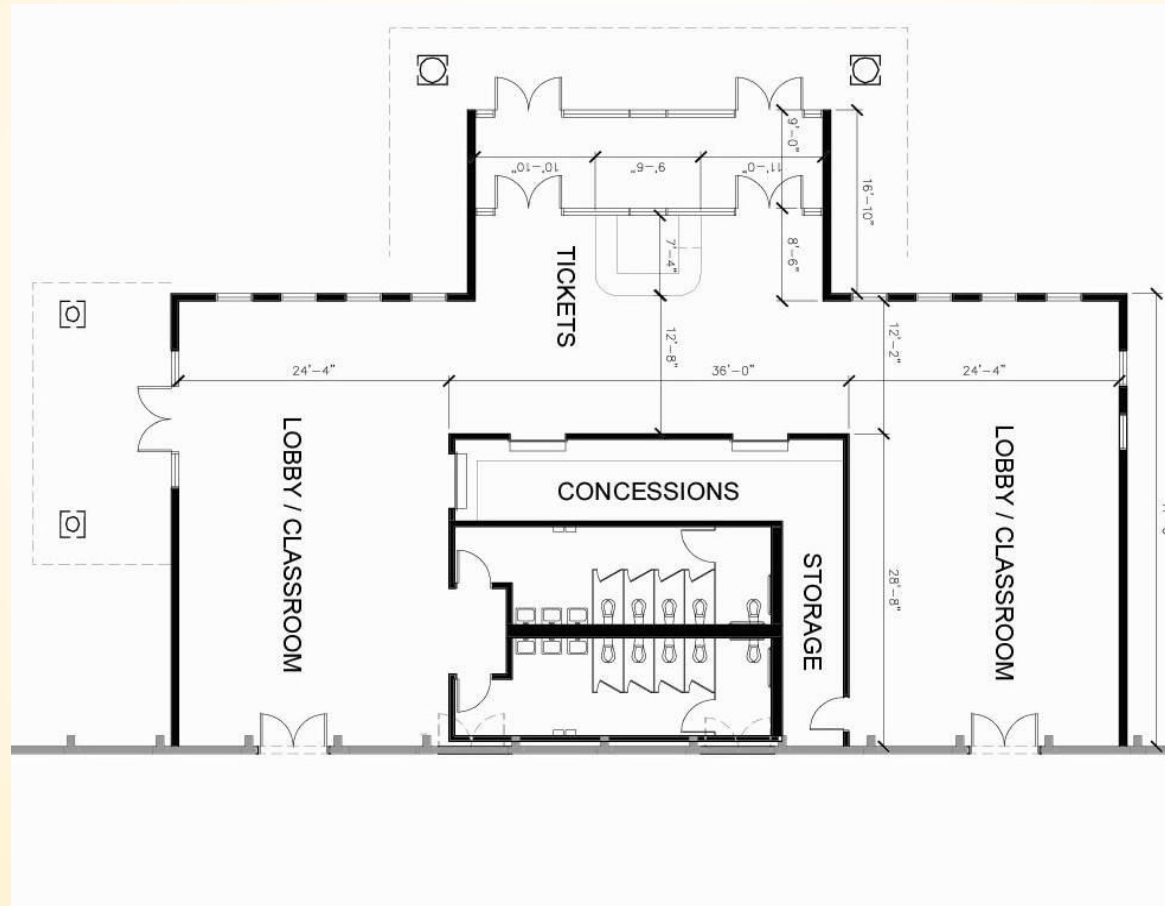


# High School Gym and Main Entrance

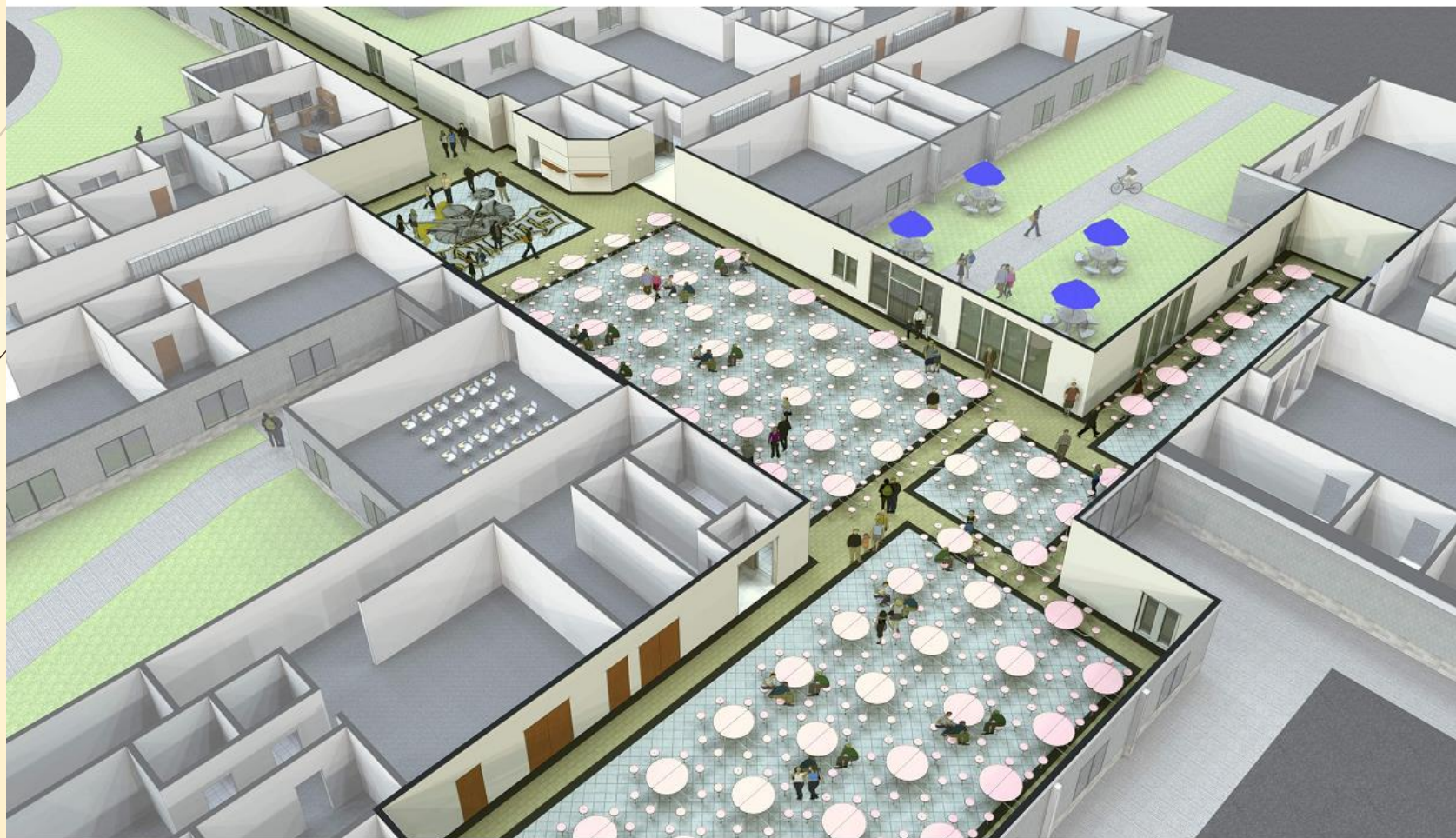




# Inside Gym Foyer



# Cafeteria

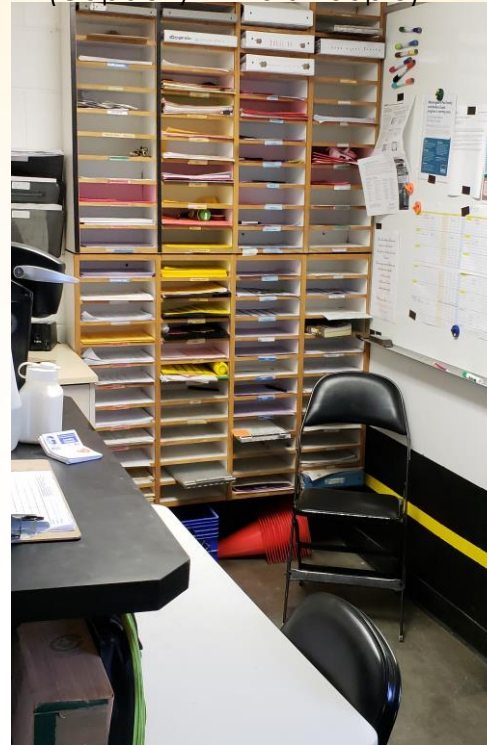




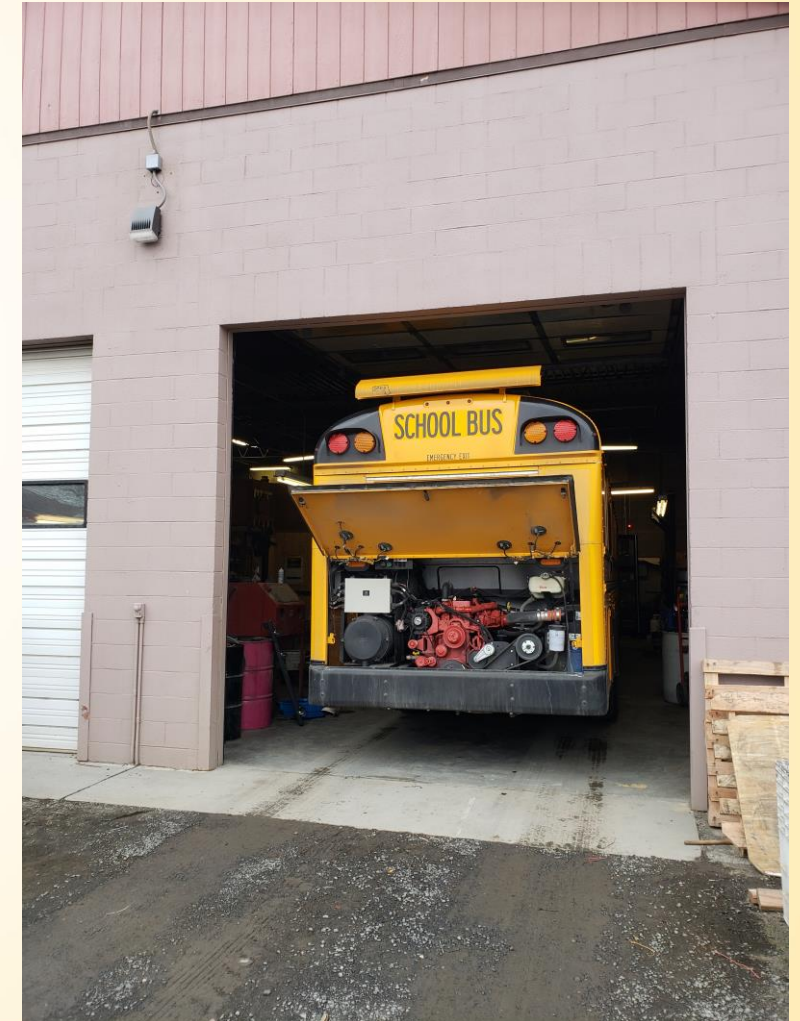
# Bus Garage



Current Conference Room  
(Capacity – 2 to 3 People)



With the bus pulled all of the way into the long bay, the mechanics have to work on the bus outside.



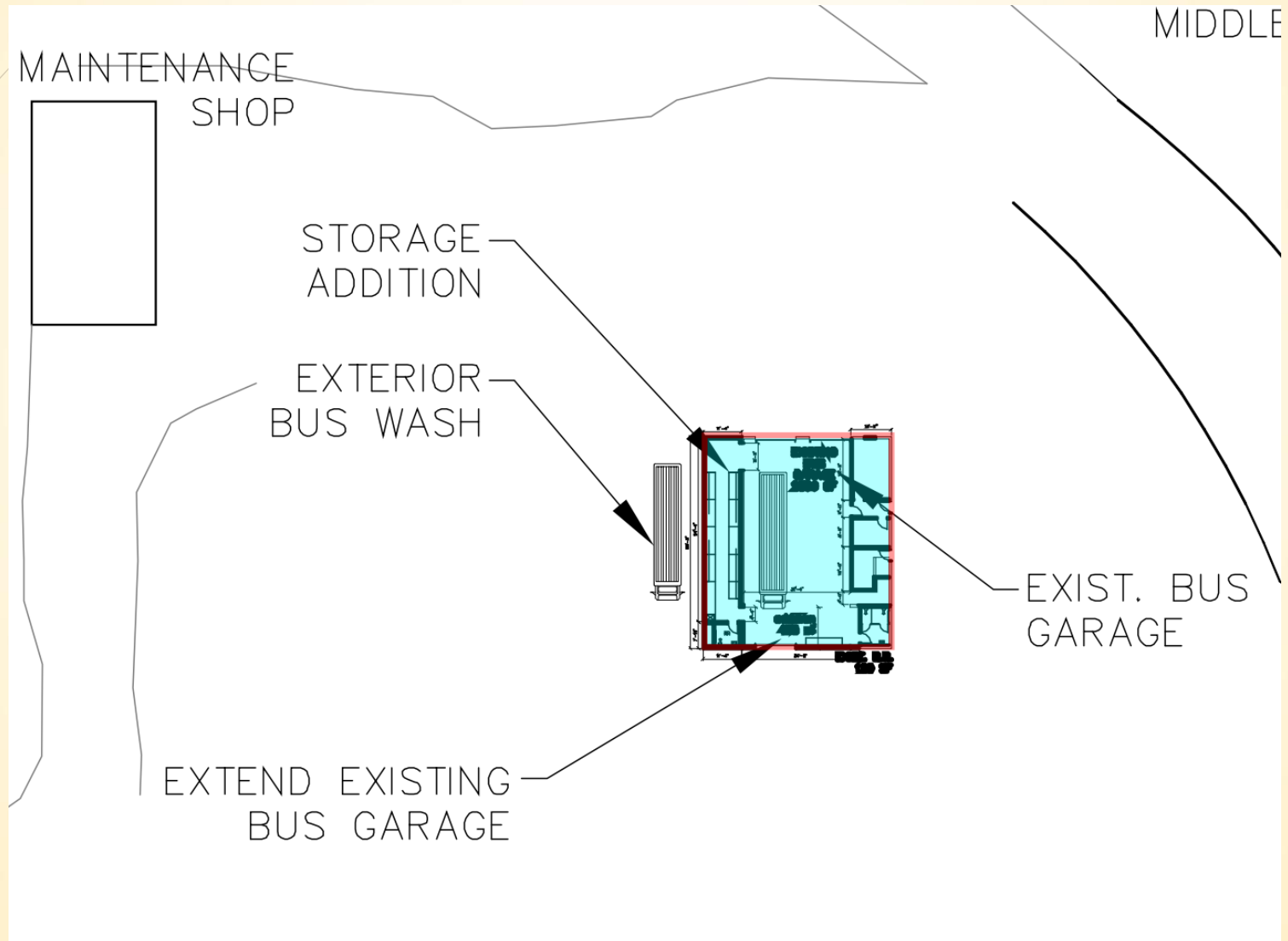


# Bus Garage

- Expand both bus bays to full size (short bay is currently unusable)
- Add wash area
- Office/Meeting Room
- Storage
- Restroom



# Bus Garage



# Current Projects



## 2018 Projects already underway...

Red Rock Elementary	\$15.8 Million
State Matching Funds	\$11.7 Million
Flood Insurance	\$1.3 Million
<b>Total District Funds Used</b>	<b>\$2.8 Million</b>

# New Bond Projects

## 2019 District Bond

Total Cost of Projects - \$20.88 Million

State Matching Funds - \$4.3 Million

Total Bond Request to Voters - \$16.58 Million

**Total Cost of All Projects (including Red Rock) = \$36.68 Million**

\$20 Million of projects Funded through sources other than bond dollars.

Coming to  
Voters  
2/12/19

# Funding for Bond

(\*Millage Rate = Cost per \$1,000 assessed value per year)

Length of Bond	2020 - *Millage Rate	Total Net Increase
18 Year	\$1.25	*\$1.00

\*Total levy rate dropped by \$.25 in January of 2019 resulting in a total net tax rate of \$1.25/1,000 compared to 2018

# What does the Millage Rate Mean for my Pocket Book?

- Monthly Increase Based on Assessed Value of Property

	\$100,000 Home	\$200,000 Home	\$300,000 Home
\$1.25 (18 Years)	\$10.42/month	\$20.84/month	\$31.26/month

# How do our tax rates compete with other comparable districts?

Royal School District Tax Comparison 2018 Total Tax Rates <sup>(1)</sup>						
District	Assessed Value <sup>(2)</sup> (\$)	Bonds (\$)	M&O (\$)	Capital (\$)	Trans. (\$)	Total (\$)
Royal School District No. 160	778,645,239	0.9439	*1.7547	0.0000	0.0000	2.6986
Warden School District No. 146	470,855,379	0.0000	2.9027	0.0000	0.0000	2.9027
Wilson Creek School District No. 167	83,256,783	0.0000	3.1649	0.0000	0.0000	3.1649
North Franklin School District No. J51-162	1,113,665,803	1.1486	2.0204	0.0000	0.0000	3.1689
Odessa School District No. 166	23,938,476	2.8866	0.4549	0.0000	0.0000	3.3415
Kittitas School District No. 403	681,494,022	1.0283	2.3306	0.0000	0.0000	3.3589
Quincy School District No. 144	3,936,002,903	2.0897	1.6301	0.0000	0.0000	3.7198
Soap Lake School District No. 156	203,467,021	0.0000	4.0711	0.0000	0.0000	4.0711
Wahluke School District No. 73	659,413,055	1.5544	2.6332	0.0000	0.0000	4.1876
Othello School District No. 147	1,175,060,771	1.8590	2.3824	0.0000	0.0000	4.2414
Lind School District No. 158	280,533,972	1.3983	2.8996	0.0000	0.0000	4.2979
Granger School District No. 204	322,613,230	2.5107	1.9815	0.0000	0.0000	4.4923
Selah School District No. 119	1,603,108,094	1.1347	3.5287	0.0000	0.0000	4.6634
Ephrata School District No. 165	837,305,929	0.0000	4.7003	0.0000	0.0000	4.7003
Ellensburg School District No. 401	2,512,463,064	1.7701	2.7396	0.2657	0.0000	4.7754
Moses Lake School District No. 161	3,891,671,795	4.6196	0.6964	0.0000	0.0000	5.3160
Richland School District No. 400	7,364,378,194	2.1047	3.4490	0.0000	0.0000	5.5538

Current

\$3.69  
If the  
bond  
passes in  
February

(1) 2018 Bond Assessed Value does not include TAV.

(2) Total Assessed Value from all counties within the District, if applicable.

\* Total M & O Levy Collection dropped from \$1.75/1,000 to \$1.50/1,000 in January 2019 resulting in a total net tax increase of \$1.00/1,000 compared to 2018



# Next Steps

- Community Citizens Committee
  - Visit Web Page for Bond – Live and Updated as Needed
  - Election – February 12<sup>th</sup>
  - Ballots will be mailed on January 24<sup>th</sup>
  - Last day to register to vote is January 15<sup>th</sup>
- 